

# **FARBERWARE®**

Farberware is a registered trademark of Farberware Licensing Company, LLC  
Manufactured and sold pursuant to a license from Farberware Licensing Company,  
LLC © 2019 Farberware Licensing Company, LLC. All rights reserved.

(rev. 05/29/20 WL)

# FARBERWARE®



FCW10BSCWHA

**1.0 Cu. Ft. Portable Washing Machine**  
**Lavadora Portátil**  
**Lave-linge portable**

Instruction Manual  
Manual de Instrucciones  
Manuel d'utilisation



# CONTENTS

SAFETY . . . . .	2
IMPORTANT SAFEGUARDS . . . . .	3
ADDITIONAL IMPORTANT SAFEGUARDS . . . . .	3
INTRODUCTION . . . . .	5
GROUNDING THE UNIT . . . . .	6
PARTS & ASSEMBLY . . . . .	7
INSTALLATION INSTRUCTIONS . . . . .	8
HOW TO OPERATE . . . . .	11
CLEANING & MAINTENANCE . . . . .	13
RETURNS & WARRANTY . . . . .	14

## SAFETY

Your safety and the safety of others is very important.

We have provided many important safety messages in this manual and on your appliance. Always read and obey all safety messages.



This is the safety alert symbol.

This symbol alerts you to potential hazards that can cause serious injury to you and others.

All safety messages will follow the safety alert symbol.

All safety messages will tell you what the potential hazard is, tell you how to reduce the chance of injury, and tell you what can happen if the instructions are not followed.

### Appliance Specifications:

120 Volts, 60 Hertz

Rated Output: 780 Watts



THIS PRODUCT IS FOR USE IN 120V AC OUTLET ONLY.

## IMPORTANT SAFEGUARDS

**A person who has not read and understood all operating and safety instructions is not qualified to operate this appliance. All users of this appliance must read and understand this Instruction Manual before operating or cleaning this appliance.**

**When using electrical appliances, basic safety precautions should always be followed, including:**

1. **Read all instructions before operating this appliance.**
2. DO NOT TOUCH the hot surfaces. Use handles or knobs.
3. This appliance is NOT A TOY.
4. Unsupervised young children and cognitively challenged individuals should never operate this appliance.
5. Close supervision is necessary when any appliance is used by or near children.
6. To protect against electrical shock do not immerse cord, plug or any part of this appliance in water or other liquids.
7. Unplug from outlet when not in use, before removing parts and before cleaning. Allow to cool before putting on or taking off any parts, and before cleaning.
8. DO NOT operate any appliance with a damaged cord or plug, or after the appliance malfunctions, or if the appliance has been damaged in any manner. Return the appliance to the nearest repair shop for examination, repair or adjustment.
9. The manufacturer does not recommend the use of accessory attachments other than what is provided by the manufacturer. Use of attachments may cause injuries.
10. DO NOT use the appliance for other than its intended use.
11. DO NOT use outdoors. FOR HOUSEHOLD USE ONLY.
12. DO NOT place on or near a hot gas or electric burner, or in a heated oven.
13. DO NOT let cord hang over edge of table or counter, or touch hot surfaces.
14. NEVER leave unit unattended while in use or when plugged into an outlet.
15. Extreme caution must be used when moving an appliance containing hot food.
16. Always attach plug to appliance first, then plug cord in the wall outlet. To disconnect, turn any control to "off," then remove plug from wall outlet.

## ADDITIONAL IMPORTANT SAFEGUARDS

### **Operating Safety Precautions**

1. Do not wash articles that have been previously cleaned in, washed in, soaked in, or spotted with gasoline, dry-cleaning solvents, or other flammable or explosive substances, as they give off vapors that could ignite or explode.
2. Do not add gasoline, dry-cleaning solvents, or other flammable or explosive substances to the wash water. These substances give off vapors that could ignite or explode.
3. Under certain conditions, hydrogen gas may be produced in a hot-water system that has not been used for two weeks or more. HYDROGEN IS EXPLOSIVE. If the hot water system has not been used for such a period, before using a washing machine, turn on all hot water faucets and let water flow from each for several minutes. This will release any accumulated

hydrogen gas. As the gas is flammable, do not smoke or use an open flame during this time.

4. DANGER: Risk of child entrapment. Child entrapment and suffocation are not problems of the past. Junked or abandoned appliances are still dangerous even if sitting in the garage.
5. Before you throw away your old portable washer, take off the lid.
6. Never allow children to operate, play with, or crawl inside the portable washer. Close supervision of children is necessary when the washer is used near children.
7. Do not reach into the washer if the agitator or inner tub is moving.
8. Do not tamper with controls.
9. Do not repair or replace any part of the washer or attempt any servicing unless specifically recommended in the user maintenance instructions or in published user-repair instructions.
10. Never clean portable washer parts with flammable fluids. The fumes can create a fire hazard or explosion.
11. Do not place the washer in steamy rooms or where the washer is directly exposed to rain. Moisture may destroy the electrical insulation causing an electrical shock hazard.
12. Do not store, use gasoline or any other flammable vapors and liquids in the vicinity of this or any other portable washer. The fumes can create a fire hazard or explosion.
13. If the power cord is damaged, it must be replaced by the manufacturer or its service agent or a similar qualified person in order to avoid a hazard.

#### **Instructions for the Electrical Cord and Plug**

1. ELECTRICAL SHOCK HAZARD: Failure to follow these instructions can result in death, fire, or electrical shock.
  - Plug into a grounded 3 prong outlet.
  - DO NOT remove ground prong.
  - DO NOT use an adapter.
  - DO NOT use an extension cord.
2. This unit **MUST** be grounded. In the event of an electrical short circuit, grounding reduces the risk of electric shock by providing an escape wire for the electric current. This unit is equipped with a cord having a grounding wire with a grounding plug. The plug must be plugged into an outlet that is properly installed and grounded.
3. WARNING: Improper use of the grounding plug can result in a risk of electric shock. **If the plug does not fit fully into the outlet, contact a qualified electrician. Do not attempt to modify the plug in any way.**
4. A short power supply cord is provided to reduce the risk resulting from becoming entangled or tripping over a long cord.
5. The manufacturer does not recommend using this machine in countries that do not support 120V AC even if a voltage adapter, transformer, or converter is in use.

## **SAVE THESE INSTRUCTIONS!**

# INTRODUCTION

Thank you for purchasing the PORTABLE 1.0 CU. FT. CLOTHES WASHING MACHINE. Now you can have the convenience of being able to move your clothes washer where you need it, with the Farberware Urban Living 1.0 Cu Ft Portable Clothes Washer. With washing capacity up to 7lbs. and 6 wash programs you can have all the wash-power you need-- exactly where you need it with easy hookup right to your sink!

Features include:

- 1.0 cu. ft. top loading washer
- Washing capacity: 7 lbs.
- Digital controls with LED display
- 6 wash programs: Normal, Heavy, Gentle, Rapid, Soak, Spin
- 6 water levels offer water and energy savings
- 800 RPM maximum spin speed for exceptional water extraction
- Durable stainless steel interior tub
- Transparent tempered glass with soft closing cover
- Premium metallic silver with chrome decoration
- Child safety lock function
- ETL & DOE compliant

# GROUNDING THE UNIT

This appliance must be grounded. In the event of a malfunction or breakdown, grounding will reduce the risk of electric shock by providing a path of least resistance of electric current. This appliance is equipped with a cord having an equipment-grounding conductor and a grounding plug. The plug must be plugged into an appropriate outlet that is installed and grounded in accordance with all local codes and ordinances.

Improper connection of the equipment-grounding conductor can result in a risk of electric shock. Check with a qualified electrician or service representative if you are in doubt whether the appliance is properly grounded. Do not modify the plug provided with the appliance; If it is not fit for the outlet. Have a proper outlet installed by a qualified electrician.



**WARNING:** Improper use of the grounding plug can result in a risk of electric shock.

## FOR PERSONAL SAFETY

DO NOT USE AN EXTENSION CORD OR AN ADAPTER PLUG WITH THIS APPLIANCE. DO NOT, UNDER ANY CIRCUMSTANCES, CUT OR REMOVE THE EARTHING CONNECTION FROM THE POWER CORD.

## ELECTRICAL REQUIREMENTS

Please look at the rating label to know the rating voltage and connect the dishwasher to the appropriate power supply. Use the required fuse 10 amp, time delay fuse or circuit breaker recommended and provide separate circuit serving only this appliance.

## ELECTRICAL CONNECTION

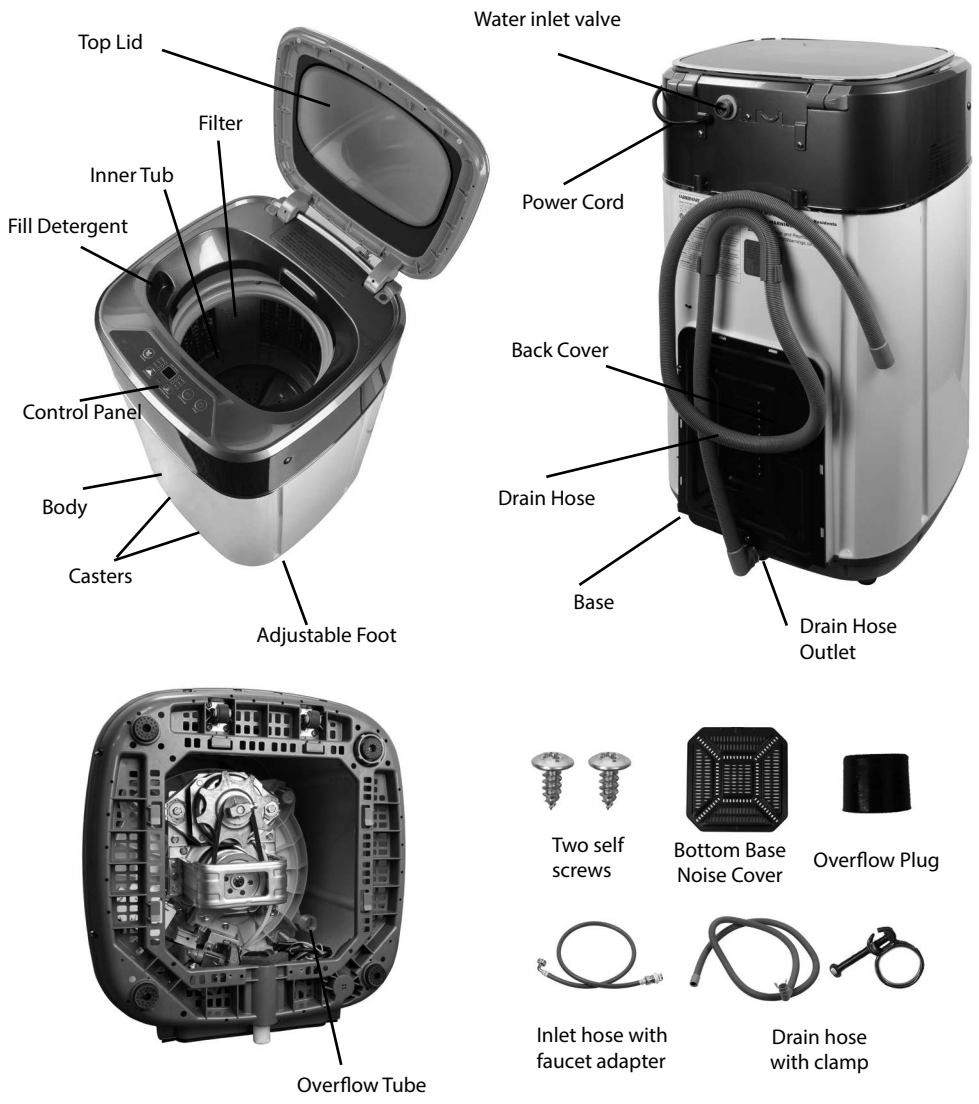
Ensure the voltage and frequency of the power being corresponds to those n the rating plate. Only insert the plug into an electrical socket which is earthed properly. If the electrical socket to which the appliance must be connected is not appropriate for the plug , replace the socket, rather than using a adapters or the like as they could cause overheating and burns.



# PARTS & ASSEMBLY

Your PORTABLE CLOTHES WASHER is fully assembled. Before using, remove all packing materials. Check the washer for any damage, such as misaligned or bent door, damaged door seals and sealing surfaces, broken or loose hinges and latches and dents inside the washer or on the door. If there is any damage, DO NOT operate the washer. Return damaged items to the store where it was purchased.

## PARTS



## CONTROL PANEL



1	Power On/Off Button
2	Start/Pause Button
3	Program Selector Button (Normal, Heavy, Gentle, Rapid, Soak, Spin)
4	Water Level Selector Button (1-6)
5	Child Lock Function To Activate: Press & Hold The Two Buttons (Water Level/Additional Rinse) For 2 Seconds. To Deactivate, Do The Same.
6	Additional Rinse Selector Button

# INSTALLATION INSTRUCTIONS

## BEFORE USING WASHER

- Remove the exterior and interior packing
- You will need the following tools:
  1. Wrench
  2. Pliers
  3. Screwdriver
- Check to be sure you have all of the following parts:
  1. One inlet hose
  2. One faucet adapter
  3. One bottom base noise cover with two screws
  4. One drain hose assembly with clamp
- Remove shipping brace. **NOTE:** It should be saved and used (to prevent damage to washer components) whenever washer is moved or transported to a new location.
- Clean the interior with lukewarm water using a soft cloth.
- Allow 2 inches of space between the back and sides of the appliance.
- DO NOT use excessively hot water (122 degrees F). Plastic parts may be deformed or damaged.

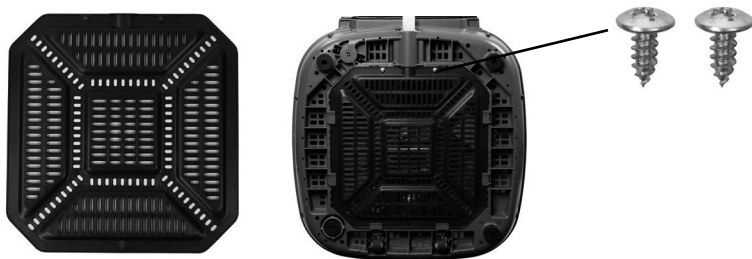
- Before washing, check all pockets to make sure any objects are out to avoid damaging washer or clothes.
- Never splash water on the control panel.

### SELECTING A LOCATION

Before you install the portable washer, select a location with the following characteristics:

- A hard level surface
- Away from direct sunlight
- Adequate ventilation
- Away from sources of heat such as gas or coal. Make sure washing machine does not stand on power cord.
- Ventilation openings must not be obstructed by carpeting when the portable washer is installed on a carpeted floor. It is recommended that you place your washer on a hard material.

### INSTALLING THE NOISE DAMPER PLATE



1. Take the noise proof plate out of the package.
2. The opening of the noise proof plate is at the bottom of the machine.
3. Lay down the machine gently and insert the noise proof plate into the washing machine base.
4. Connect the noise proof plate by using the two screws provided.

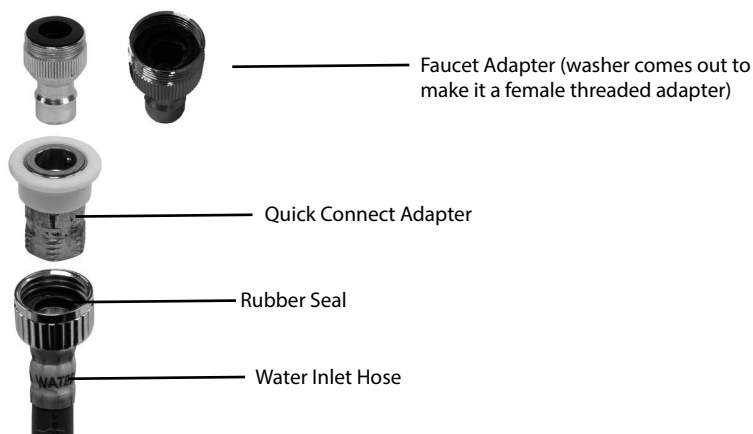
### CONNECTING THE WATER INLET HOSE

The water inlet hose must be connected to the washing machine at one end and to the faucet at the other. Do not stretch the water supply hose. If the hose is too short and you do not wish to move the water faucet, replace the hose with a longer, high-pressure hose.

Use the faucet adapter provided to connect to the faucet. If adapter does not fit, you will have to visit your local hardware store to find the one that fits. The end of the faucet spout should be longer than 10 mm (0.4 inches) or the connector cannot be fixed properly. Water leakage could develop.

**NOTE:** Plumbing tape (not included) is recommended for a better seal.





**NOTE:** Some faucets may require you to also use the female hose thread adapter between the male adapter and your sink faucet, depending on the sink faucet. The rubber washer needs to be removed to make it female. Make sure the rubber washer ring is inserted and connected to your sink or there is a risk for water leakage.

**WARNING:** If water leaks from faucet connection or washer connection, turn off water and tighten fully using a wrench. Be careful not to over tighten and damage water connection. Turn on water supply and make sure no leaks are present.

#### DISCONNECTING THE WATER INLET HOSE

Dismantling the hose directly may cause water to splash due to the possible high water pressure in the hose, even after the faucet has been turned off. Please take off the hose as per following steps, even if the faucet is closed.

- Turn off the faucet and then turn on the power and have let the machine run for about 5 seconds then turn it off.
- Remove the connecting nuts from the faucet and washing machine.

**NOTE:** If the washing machine is frequently used, it is not necessary to dismantle the inlet hose to avoid possible damage to the screws.

#### CONNECTING THE DRAIN HOSE


**WARNING:** Included is one drain hose with a screw clamp. Connect the bottom end of the drain hose (L Shaped) over the drain hose outlet, which is located at the back of the unit on the bottom as seen in picture. Make sure clamp is screwed on tight, ensuring the hose cannot slip off, which would result in water leakage.


**WARNING:** The other end should be placed in a dedicated drain outlet, basin or tub/sink. **DO NOT LET DRAIN HOSE HANG ON THE GROUND.** Water must be drained safely or there will be water damage. Make sure end of drain hose is in a secured position otherwise water pressure can force the hose to come loose, which can result in water damage.

**WARNING:** The highest point of the drain hose must be in the height of 2-4 feet above floor level, otherwise the washer cannot work normally. Make sure drain hose is in a secured position otherwise the water pressure can force the hose to come loose, resulting in water leakage. Washer should not be operated if leaks from washer connections are present.

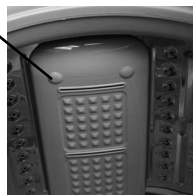


**OVERFLOW TUBE**

 Your washing machine is equipped with an overflow tube for when water exceeds the maximum level in the washing machine. The overflow plug will prevent water from leaking to the ground. If overflow tube fills up, properly drain the water.

 **WARNING:** Do not fill the washing machine with more than 7 pounds of clothes, otherwise overflow tube may fill up, which could result in water leakage. See Automatic Wash Cycles chart on the next page to select the appropriate amount of water.

Max Fill Line

**OPERATING INSTRUCTIONS****BEFORE WASHING**

Make sure both the water inlet and drain hoses are installed properly and the end of the drain hose is in a secured draining spot (instructions above). Once unit is plugged in, make sure you place the wash load into the tub evenly. Mix large and small articles of clothing to get the best washing results. Drop articles loosely into the inner tub. Clothing should move freely through the washer for best cleaning results.



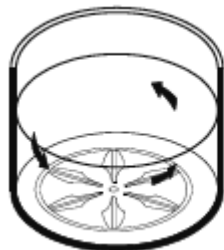
When washing very large articles, do not fill inner tub as full as with other loads. The water level in your washer should fit the size of your wash load. Small loads will use lower water levels. There must be enough water in the inner tub to allow articles to move and turn over freely. Overloading the inner tub can result in poor washing and rinsing. Overloading may also cause wrinkling and tearing.

**HOW TO START A CYCLE**

To select one of the pre-programmed automatic wash cycles, follow the instructions as shown below:

1. Turn on the water supply.
2. Pour laundry detergent in the laundry dispensing hole (on top of tub, see picture).
3. Close the lid. **NOTE:** Lid must be closed in order to start a cycle.
4. Press the power button.
5. Press program button to select program until the indicator light is ON. (Heavy is default).
6. Press the water level button to select the appropriate water level setting (Can choose between 1-6. Default is 3).
7. Press the Start/Pause to start the cycle. LED display will show the remaining time left of the cycle.

Correct



Wrong



## AUTOMATIC WASH CYCLES

Wash Program	Wash Type	Water Level Selection Range	Water Level Default	Wash Time (Min/Sec)	Rinse Time	Spin Time	Total Time
NORMAL	Normal Use	1-6	3	18 Minutes	6	4	37
RAPID	Lightly Dirty		1	3 Minutes	4	2	13
GENTLE	Cottons	1-6	3	3 Minutes	8	3	26
HEAVY	Jeans	1-6	3	18 Minutes	9	5	47
SOAK	Delicates	1-6	3	Soak 30 Minutes Wash 20 Minutes	24	5	95

- Clothes easily discolored should be washed separately to prevent inter-dying.
- If you want to change a selected program, press the POWER button first to turn the unit off. Then press the POWER button again to turn unit on, then press the program button to select the new cycle.
- When the Rinse and Spin functions are on, do not use detergent.
- If you want to drain the water during washing, press the POWER button first to turn the unit off, then press the POWER button again to turn the unit back on, then select the Spin function.

## ADDING/REMOVING CLOTHING AFTER CYCLE HAS STARTED

Your washing machine is equipped with a safety system that will stop the machine when the lid is opened during a wash cycle. To add or remove clothing from a cycle, follow the steps below:

1. Open the lid. Machine will stop and all indicator lights will turn off.
2. Add or remove clothing as needed.
3. Close the lid. **NOTE:** Lid must be closed in order to start a cycle. Press the Start/Pause button to continue the previous wash cycle.



**WARNING:** Certain internal parts are intentionally not grounded and may present a risk of electric shock only during servicing. Service personnel - do not contact the following parts while the appliance is energized. Unplug the unit.

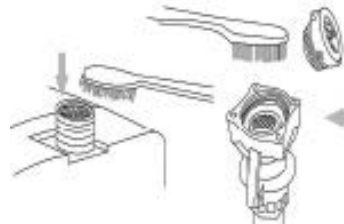
# CLEANING & MAINTENANCE

## CLEANING YOUR PORTABLE WASHER

- Clean the surface of your portable washer regularly with soft fabric.
- Clean the inner tub regularly, especially immediately after starch or bleach operation.
- Clean the filter in the inlet valve or inlet hose regularly in order to prevent it from clogging.

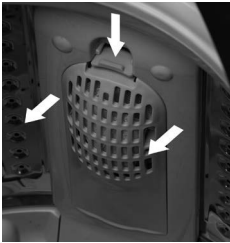


1. Unplug the power cord.



2. Remove the inlet hose and clean the filter with a brush.

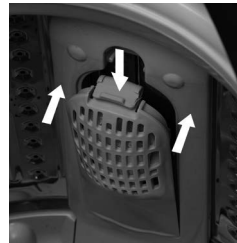
- Clean the lint filter



1. Gently push the tab down and outward to remove line filter.



2. Clean and rinse it thoroughly.



3. Reinstall.

# RETURNS & WARRANTY

SHOULD YOUR UNIT NOT WORK OR IF DAMAGED WHEN YOU FIRST TAKE IT OUT OF THE BOX, PLEASE RETURN IT TO THE PLACE OF PURCHASE IMMEDIATELY.

## Portable Clothes Washer / FCW10BSCWHA

Should you have any questions, please contact us via email or at the customer service number listed below between the hours of 8:00 AM and 5:00 PM, Monday through Friday, Central Standard Time.

### Distributed by:

Englewood Marketing LLC  
1471 Partnership Dr.  
Green Bay, WI 54304-5685  
Customer Service  
Phone: 844-918-0509  
Email: CustomerService@emllc-USA.com

### One-Year Limited Warranty

This warranty applies to products purchased and used in the U.S. and Canada. This is the only expressed warranty for this product and is in lieu of any other warranty or condition.

This product is warranted to be free from defects in material and workmanship for a period of one (1) year from the date of original purchase. This warranty is valid for the original retail purchaser or gift recipient from the date of initial retail purchase and is not transferable.

Keep your original sales receipt as proof of purchase is required to make a warranty claim.

**IMPORTANT:** This warranty does not cover damages resulting from use not in conformity with the printed directions, accident, misuse or abuse, alternation, the affixing of any attachments not provided with the product, loss of parts, or subjecting the appliance to any but the specified voltage. (Read directions carefully.) This warranty is void if the product is used for other than single-family household use or subjected to any voltage and waveform other than as specified on the rating label (e.g., 120V ~ 60 Hz).

Englewood Marketing LLC excludes all claims for special, incidental, and consequential damages caused by breach of express or implied warranty. All liability is limited to the amount of the purchase price. Every implied warranty, including any statutory warranty or condition of merchantability or fitness for a particular purpose, is disclaimed except to the extent prohibited by law, in which case such warranty or condition is limited to the duration of this written warranty. This warranty gives you specific legal rights. You may have other legal rights that vary depending on where you live. Some states or provinces do not allow limitations on implied warranties or special, incidental, or consequential damages, so the foregoing limitations may not apply to you.

To make a warranty claim or if service is required, please call our CUSTOMER SERVICE NUMBER.

For faster service, please have the model, type, and series numbers ready for the operator to assist you.

Customer Service Number  
Englewood Marketing LLC  
In the US 844-918-0509  
Email: CustomerService@emllc-USA.com

### **This warranty does not apply to re-manufactured merchandise.**

Please read the operating instructions carefully. Failure to comply with the operating instructions will void this warranty.